

Stainless Steel Support Jacks

Stainless steel support jacks from BrandTech Scientific are rugged supports that are excellent for a wide variety of critical laboratory applications. Constructed entirely from stainless steel and POM rollers and PF31 phenolic knob, these support jacks are exceptionally stable and well-suited for corrosive environments such as fume hoods, water baths, marine and industrial labs, and more.

- **Supports a Wide Variety of Items:** Stainless steel support jacks are available in a range of sizes and load capacities up to 176 pounds for most lab applications.
- **Helps Reduce Contamination:** Support jacks feature smooth surfaces that are easy to clean and sanitize. All support jacks are fully autoclavable at 121°C for sterile applications.
- **Reaches New Heights:** These stainless steel support jacks are now also available in Maxi-Lift models. Maxi-Lift stainless steel support jacks have a maximum height that is approximately 30% higher than traditional support jacks for special applications.
- **Offers a Wide Variety of Options:** BrandTech Scientific offers support jacks manufactured with anodized aluminum and powder-coated aluminum decks (on stainless steel lift mechanisms) for less critical applications.
- **Two-year warranty on all support jacks**



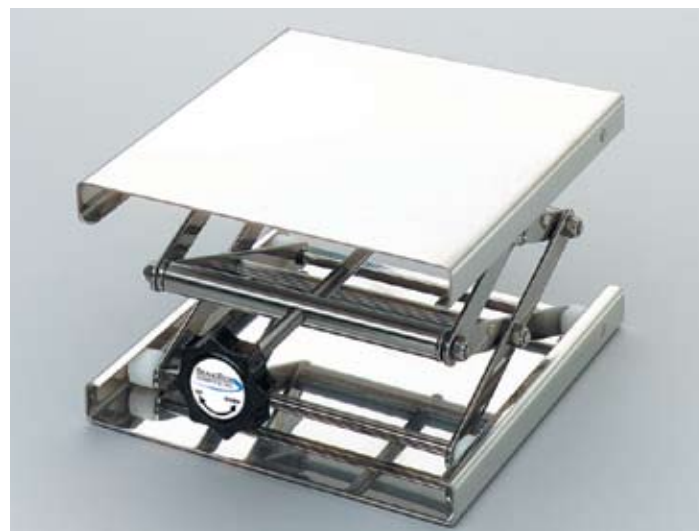
Rugged Laboratory Supports for Critical Environments.

Stainless Steel Support Jacks

Optional Handle

An optional ratcheting handle is available to simplify use of BrandTech's larger support jacks.

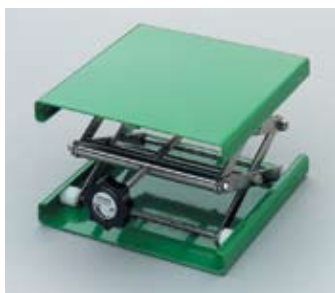
This handle simply slides onto the handwheel of 11.8 x 11.8 in. and 15.7 x 15.7 in. support jacks to greatly reduce the effort required for raising and lowering the instrument.



Also Available

Support jacks with Epoxy Powder-coated Aluminum and Anodized Aluminum decks, with stainless steel lift mechanisms.

Epoxy Powder Coat



Anodized Aluminum



ORDERING INFORMATION

Description Plate, L x W in., (cm)	Min Ht.		Max Ht		Max. Load		Cat. No.	2009 List Price
	in.	(cm)	in.	(cm)	lbs.	(kg)		
Stainless Steel Support Jacks								
3.9 x 3.9 (10 x 10)	2.2	(5.5)	4.7	(12)	22	(10)	B11115	\$212.00
6.3 x 5.1 (16 x 13)	2.4	(6.0)	10.8	(27.5)	44	(20)	B11120	227.00
7.9 x 7.9 (20 x 20)	2.4	(6.0)	10.8	(27.5)	44	(20)	B11130	278.00
9.4 x 9.4 (24 x 24)	2.4	(6.0)	10.8	(27.5)	44	(20)	B11140	296.00
11.8 x 11.8 (30 x 30)	5.1	(13.0)	18.5	(47)	176	(80)	B11180	1,410.00
15.7 x 15.7 (40 x 40)	5.1	(13.0)	18.5	(47)	176	(80)	B11190	1,584.00
Maxi-Lift Stainless Steel Support Jacks								
6.3 x 5.1 (16 x 13)	3.0	(7.5)	15.7	(40)	44	(20)	B11122	272.00
7.9 x 7.9 (20 x 20)	3.0	(7.5)	15.7	(40)	44	(20)	B11132	332.00
Anodized Aluminum Deck Support Jacks								
3.9 x 3.9 (10 x 10)	2.2	(5.5)	4.7	(12)	22	(10)	B11016	159.00
6.3 x 5.1 (16 x 13)	2.4	(6.0)	10.8	(27.5)	44	(20)	B11021	178.00
7.9 x 7.9 (20 x 20)	2.4	(6.0)	10.8	(27.5)	44	(20)	B11031	216.00
9.4 x 9.4 (24 x 24)	2.4	(6.0)	10.8	(27.5)	44	(20)	B11041	239.00
11.8 x 11.8 (30 x 30)	5.1	(13.0)	18.5	(47)	176	(80)	B11081	1,025.00
15.7 x 15.7 (40 x 40)	5.1	(13.0)	18.5	(47)	176	(80)	B11091	1,210.00
Powder-coated Aluminum Deck Support Jacks								
3.9 x 3.9 (10 x 10)	2.2	(5.5)	4.7	(12)	22	(10)	B11015	145.00
6.3 x 5.1 (16 x 13)	2.4	(6.0)	10.8	(27.5)	44	(20)	B11020	164.00
7.9 x 7.9 (20 x 20)	2.4	(6.0)	10.8	(27.5)	44	(20)	B11030	197.00
9.4 x 9.4 (24 x 24)	2.4	(6.0)	10.8	(27.5)	44	(20)	B11040	216.00
11.8 x 11.8 (30 x 30)	5.1	(13.0)	18.5	(47)	176	(80)	B11080	899.00
15.7 x 15.7 (40 x 40)	5.1	(13.0)	18.5	(47)	176	(80)	B11090	1,110.00
Accessories								
Optional Ratchet Wrench for B11180, B11190, B11081, B11091, B11080, B11090							B11089	54.00